



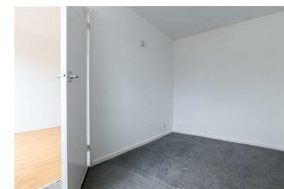
# Alexander Hudson Estates

---

Sales Particulars

# Alexander Hudson Estates

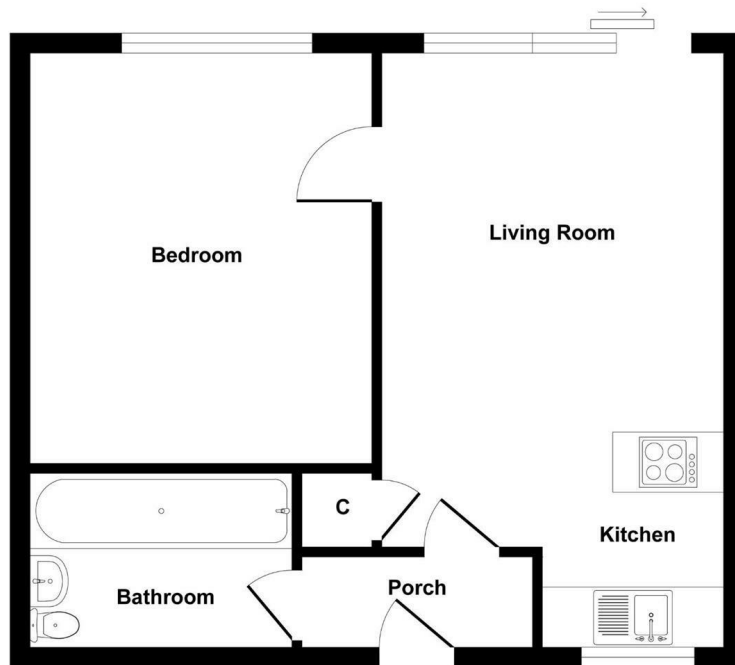
Belsay Gardens, Red House Farm, NE3



# The Property

Alexander Hudson Estates introduces to the market this first-floor, one bedroom apartment in the popular area of Red House Farm, Fawdon. Close to local shops, amenities and transport routes, conveniently located and within easy reach of Newcastle City Centre, Gosforth High Street and Kingston Park.

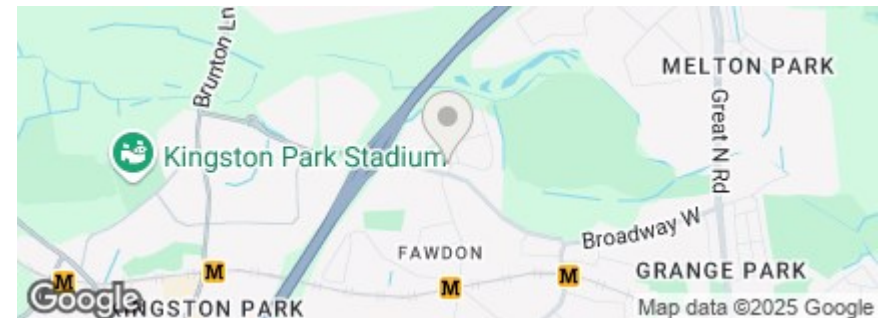
The property offers a watertight single garage and is available immediately on an unfurnished basis.



**Floor Plan**

Produced by Elements Property

Council Tax: A  
EPC Rating: 68





---

Alexander Hudson Estates  
The Printworks  
20 Arrow Close  
NE12 6QN

0191 268 7433  
[sales@alexanderhudson.co.uk](mailto:sales@alexanderhudson.co.uk)